

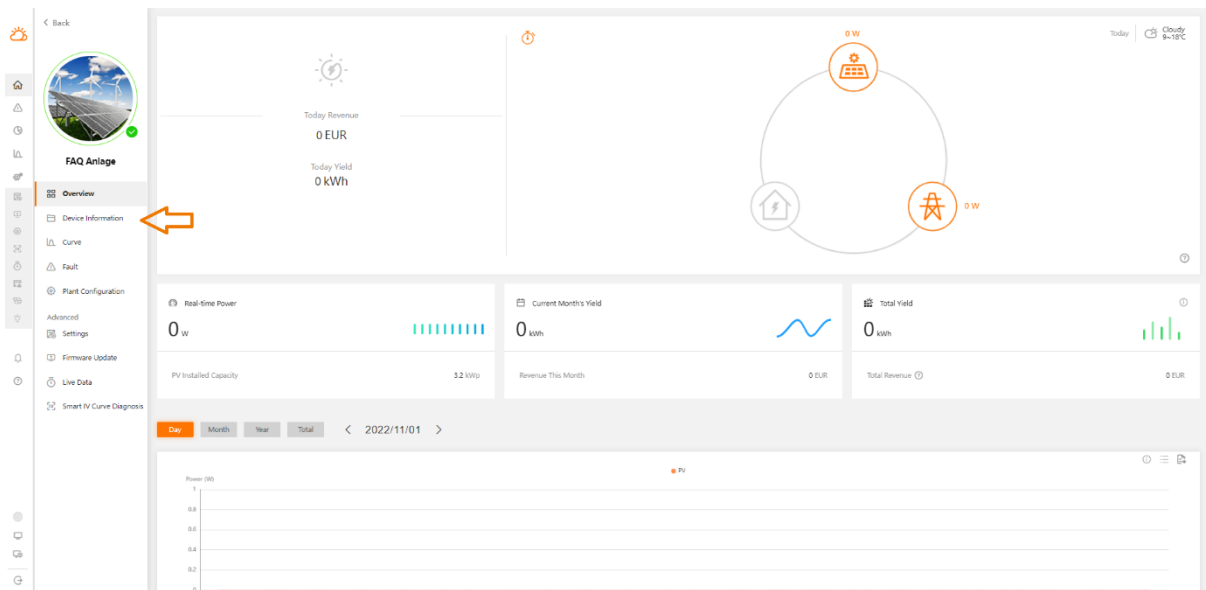
Data Logger FAQ

How to exchange WiNet-S in iSolarCloud-web interface

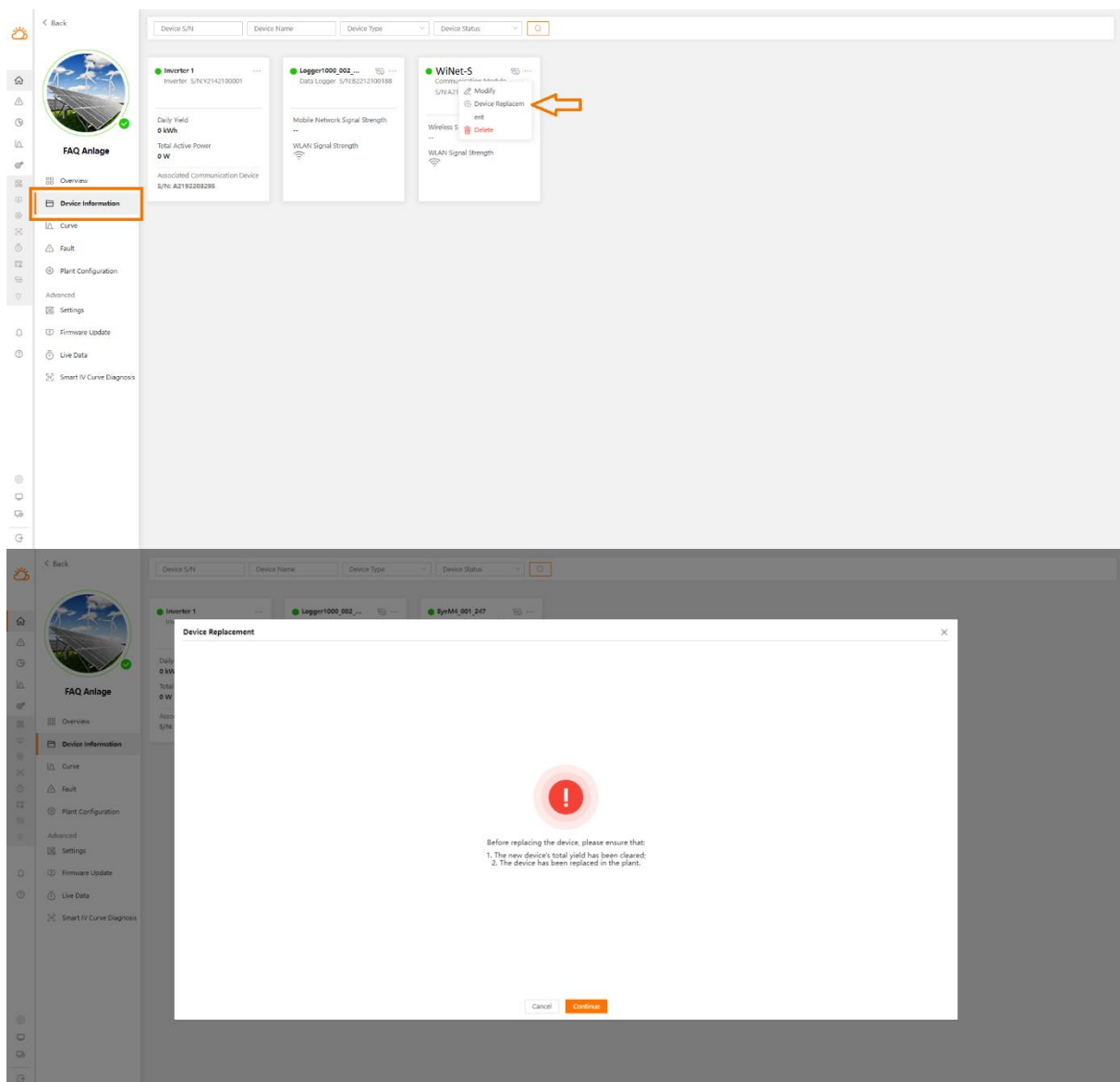
Applicable to: WiNet-S

To exchange the SUNGROW Winet-S, please proceed as followed.

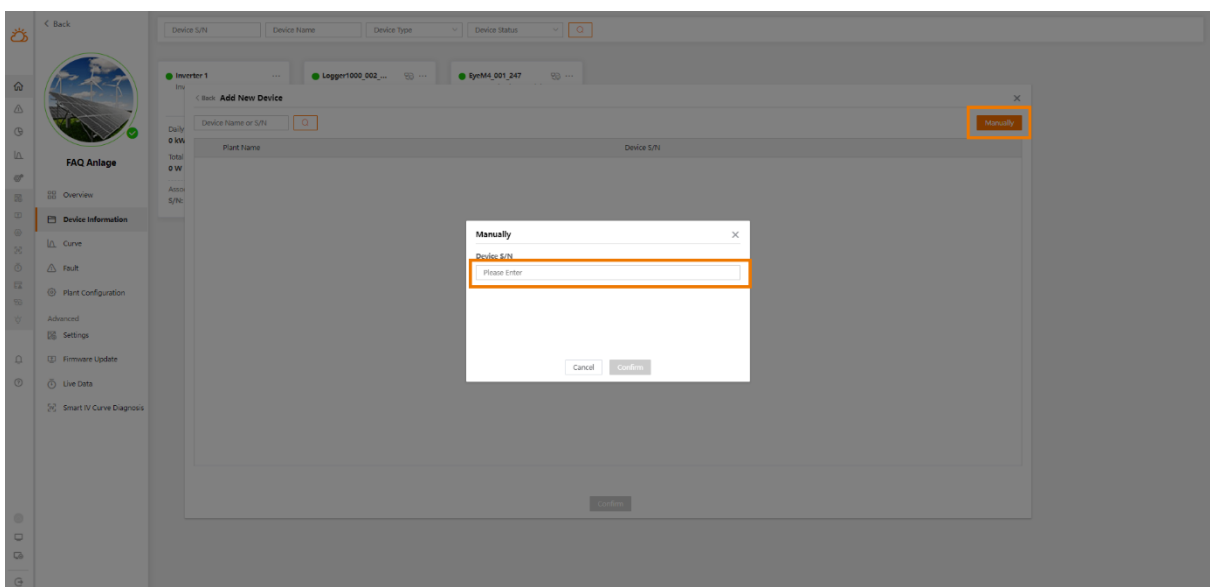
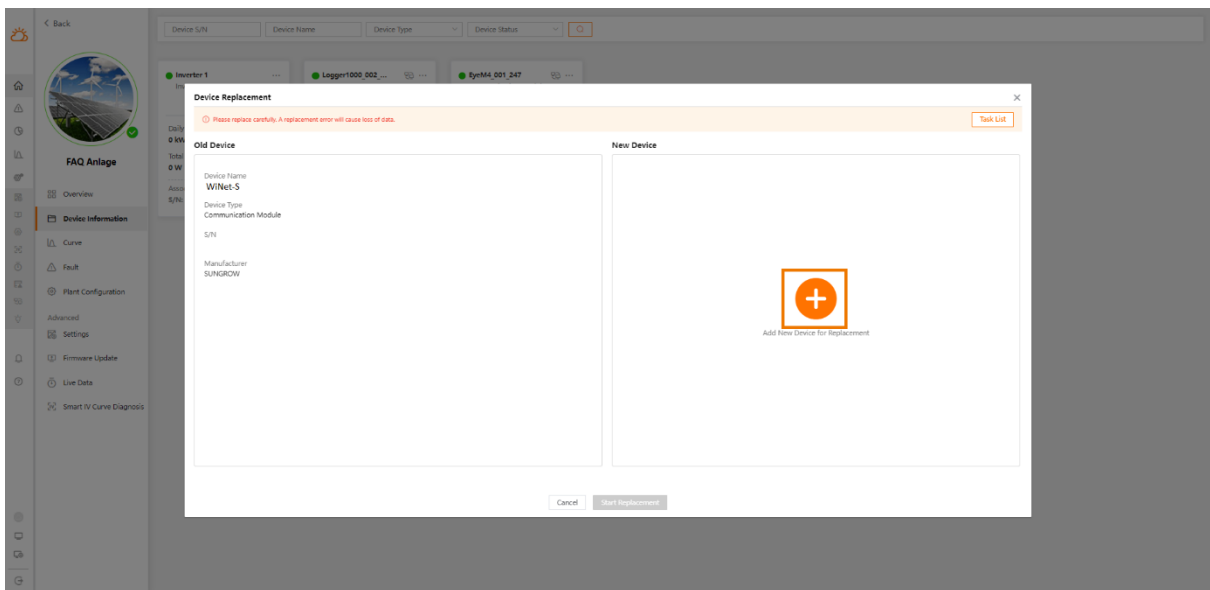
1. Open iSolarCloud and go to the plant overview. Select **Device Information**.



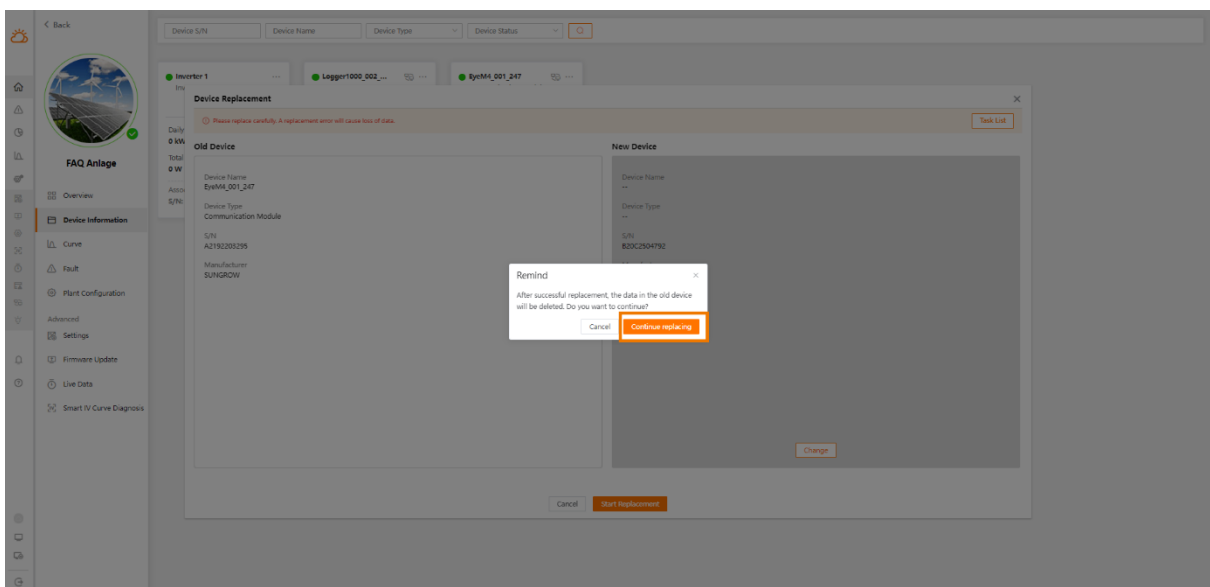
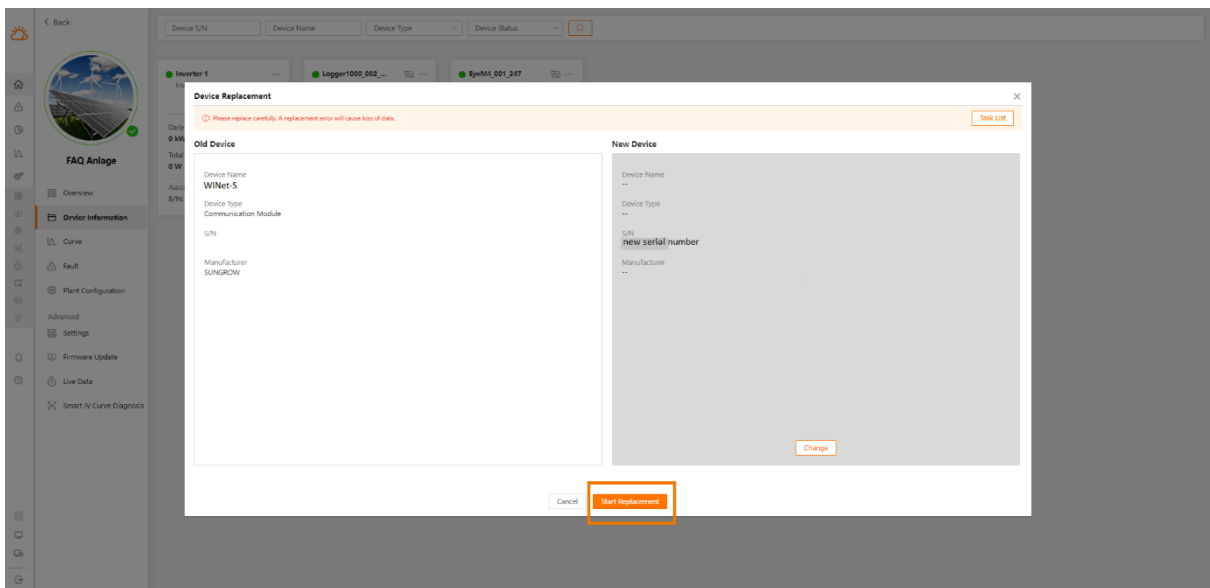
2. Click the three dots, next to the WiNet-S you want to exchange and click **Device Replacement**. **Continue** on the next page after noticing the two points.



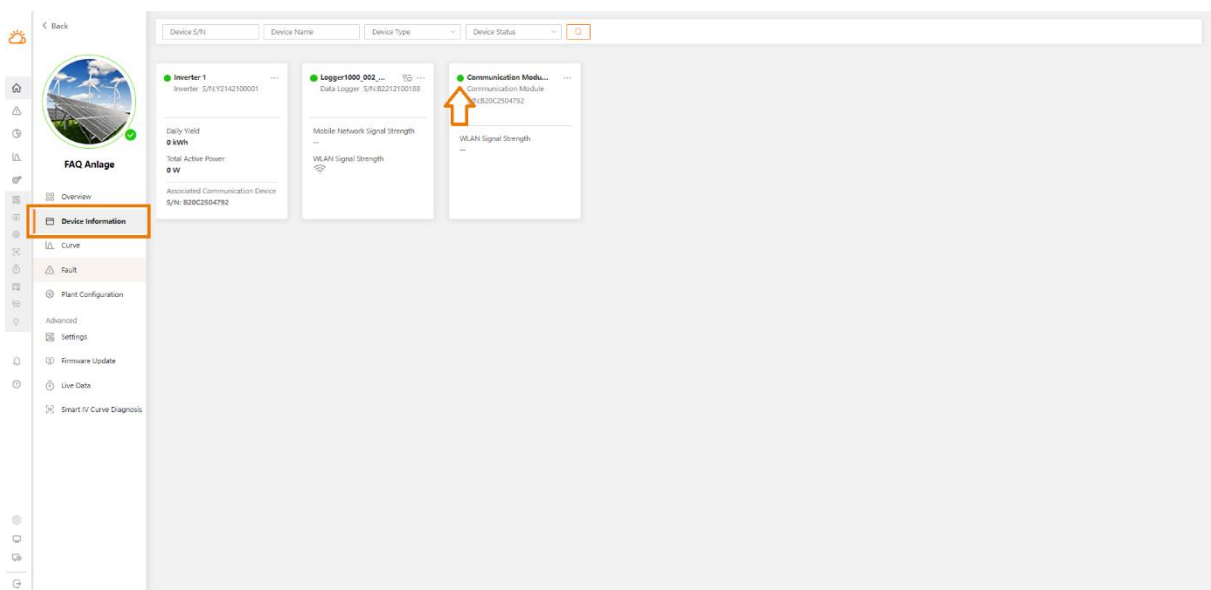
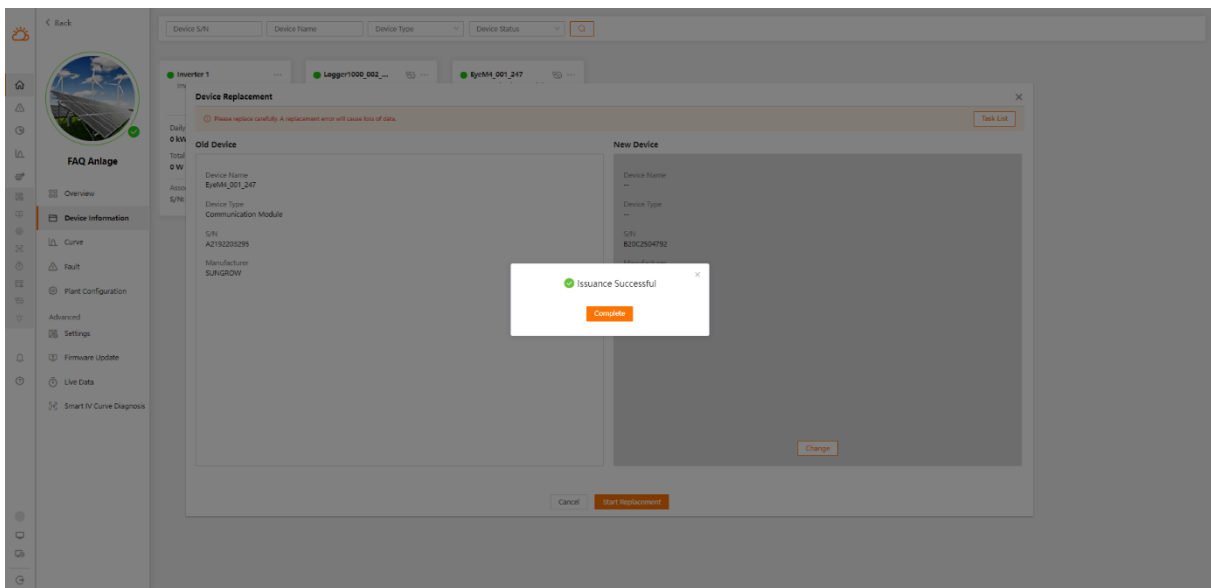
3. Click the **+** to replace the selected device. Select **Manually** on the next page and type in the serial number of the new WiNet-S.



4. Check both serial numbers, if they are correct. If so, **Start Replacement**. **Continue replacing** after noticing the warning.



5. When the exchange was successful, you will see the window below. After some minutes, the new WiNet-S will appear green marked in the **Device Overview**.



For further information, please download the user manual [here](#).

This manual is intended for professional technicians who are responsible for installation, operation, maintenance and troubleshooting of inverters, and users who need to check inverter parameters. The inverter must only be installed by professional technicians.

The professional technician is required to meet the following requirements:

- Know electronic, electrical wiring and mechanical expertise, and be familiar with electrical and mechanical schematics.
- Have received professional training related to the installation, commissioning and troubleshooting of electrical equipment.
- Be able to quickly respond to hazards or emergencies that occur during installation, commissioning and troubleshooting.
- Be familiar with local standards and relevant safety regulations of electrical systems.
- Read this manual thoroughly and understand the safety instructions related to operations.