

Data Logger FAQ

My plant is not visible on iSolarCloud – What can I do?

Applicable to: Logger1000/EyeM4

WiFi-login

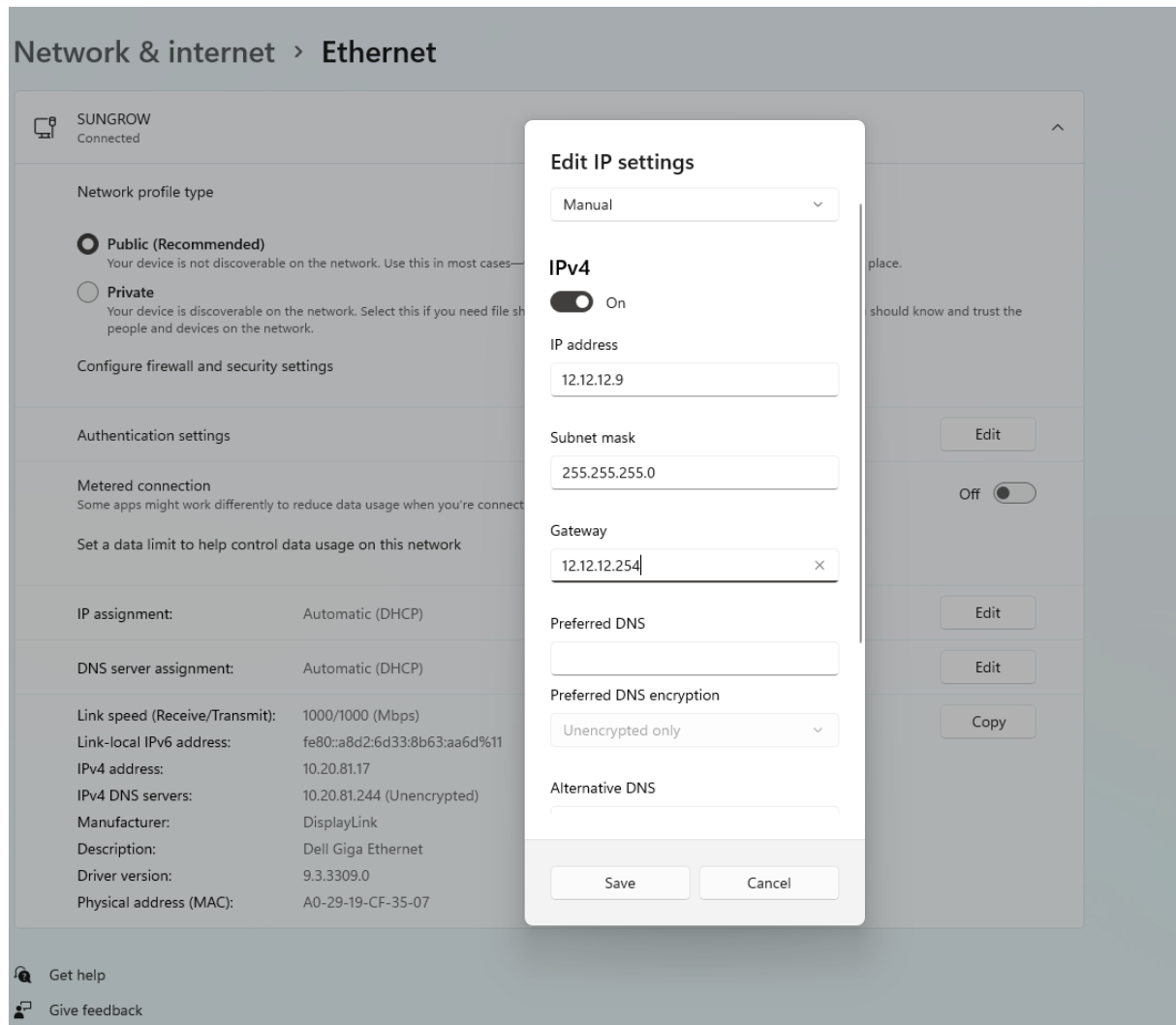
Logger1000 and EyeM4 support WiFi-login. After the device is powered, check the SN code on the device and select the WiFi hotspot signal named SG-XXXX (XXXX is the device SN) to connect to WiFi.



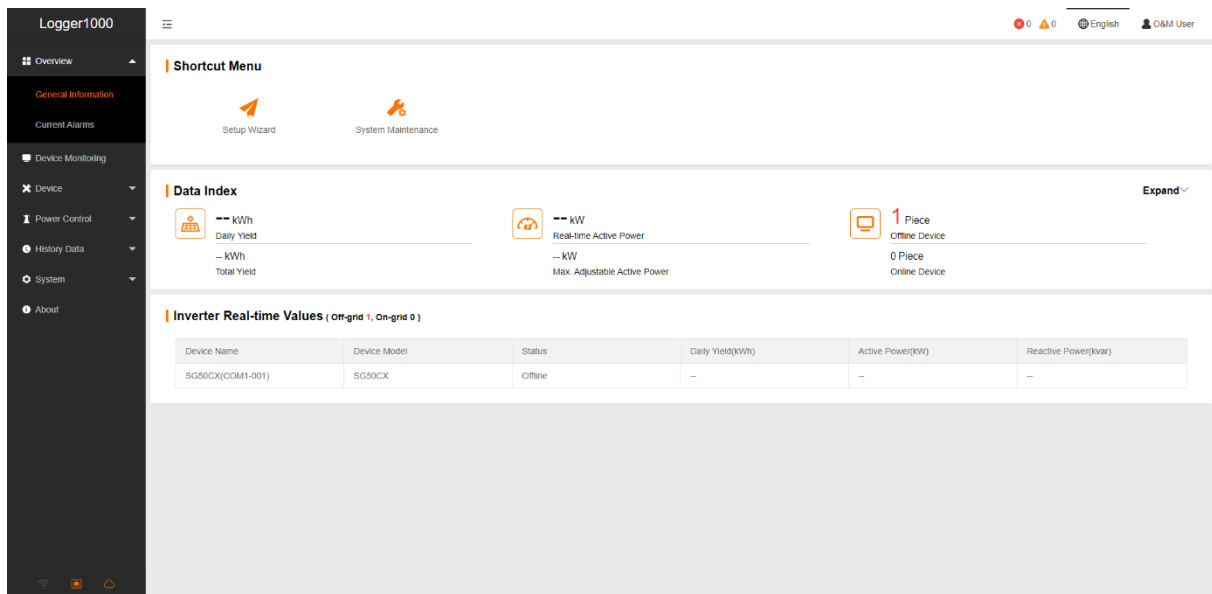
Enter the default IP address of Logger 1000/EyeM4 in the browser address bar after the device is connected: **11.11.11.1** to open the device management interface, the initial password is **pw1111**.

Ethernet login

Logger 1000 also supports Ethernet login. The default IP address of Logger 1000 is **12.12.12.12**. First, after the device is powered, use the network cable to connect it with the computer, and change the IP address of the computer to make it in the same network segment as the device, as shown in the following figure.

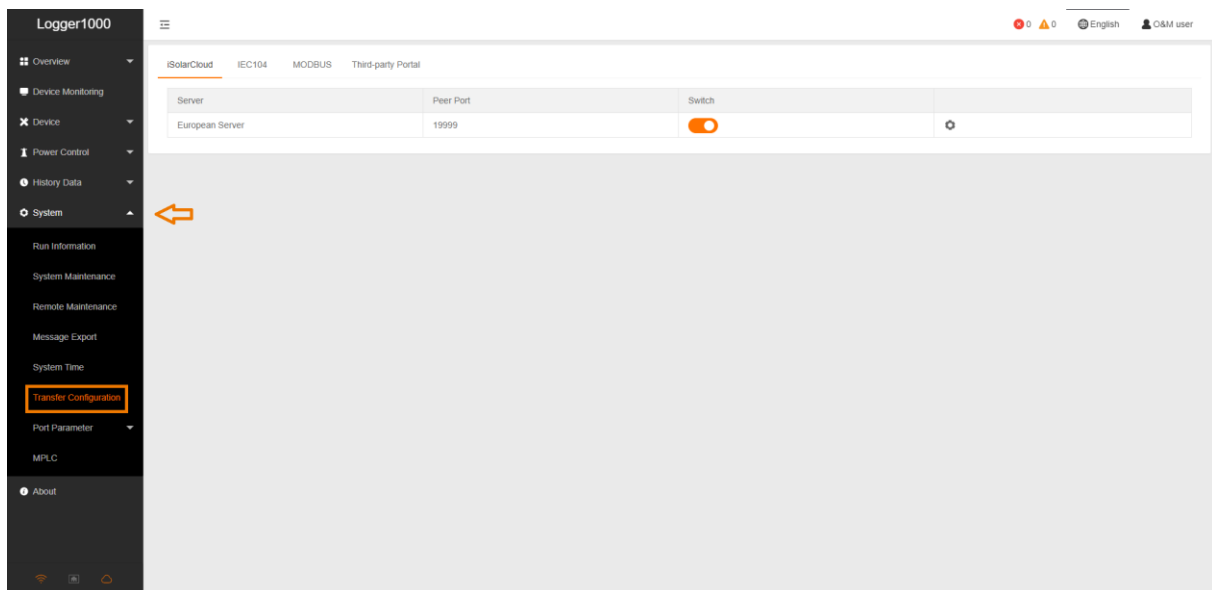


Enter the default IP address of Logger 1000 in the browser address bar after the device is connected: **12.12.12.12** to open the device management interface, and the initial password is **pw1111**. After logging in, the main interface of Logger1000 is shown in the following figure.

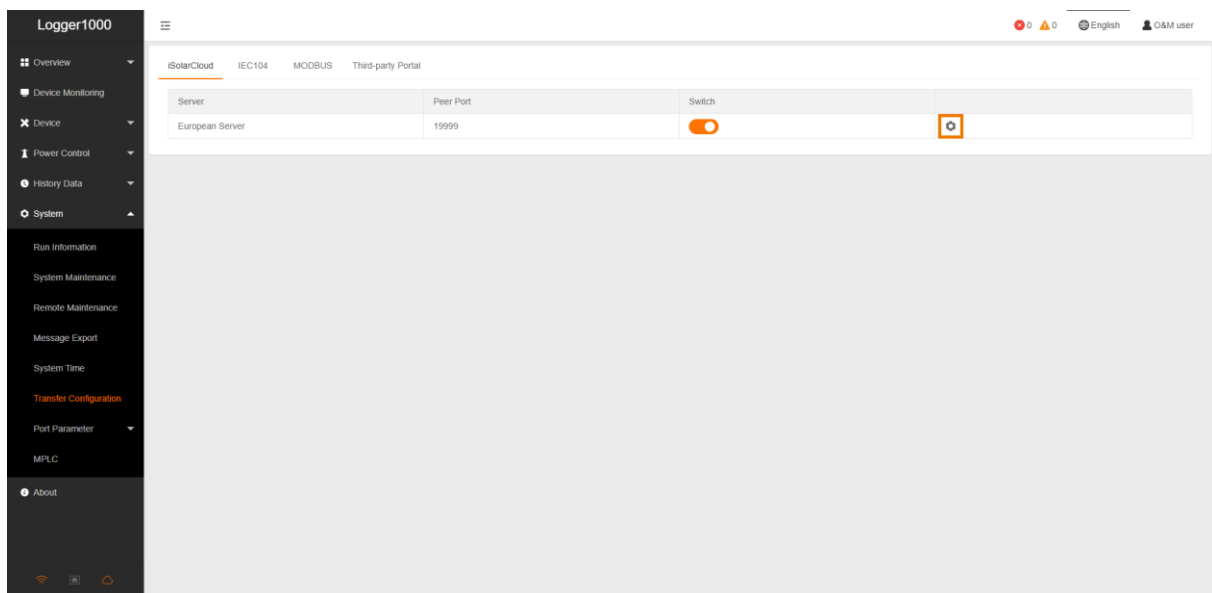


Make sure, your Datalogger is updated to the latest firmware.

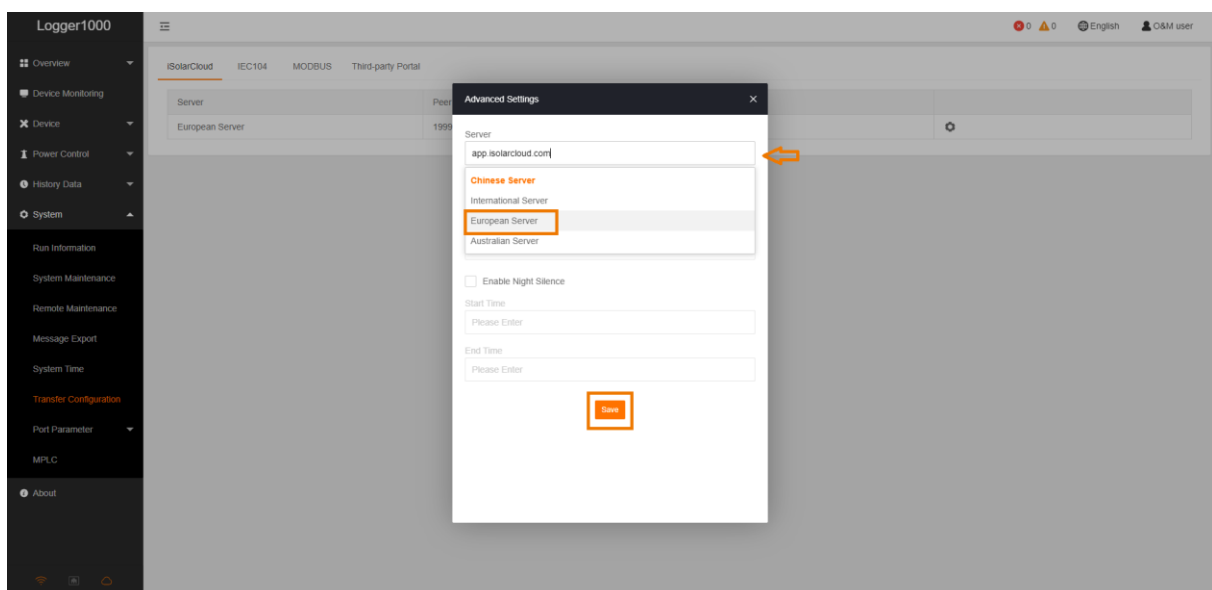
Use the navigation bar to click **System** and open **Transfer Configuration**.



Open the settings by pressing .



Choose **European Server** as your preferred Server and **Save** the settings. Plant will now be shown on the European iSolarCloud-Server.



For further information, please download the user manual [here](#).

This manual is intended for professional technicians who are responsible for installation, operation, maintenance and troubleshooting of inverters, and users who need to check inverter parameters. The inverter must only be installed by professional technicians.

The professional technician is required to meet the following requirements:

- Know electronic, electrical wiring and mechanical expertise, and be familiar with electrical and mechanical schematics.
- Have received professional training related to the installation, commissioning and troubleshooting of electrical equipment.
- Be able to quickly respond to hazards or emergencies that occur during installation, commissioning and troubleshooting.
- Be familiar with local standards and relevant safety regulations of electrical systems.
- Read this manual thoroughly and understand the safety instructions related to operations.