

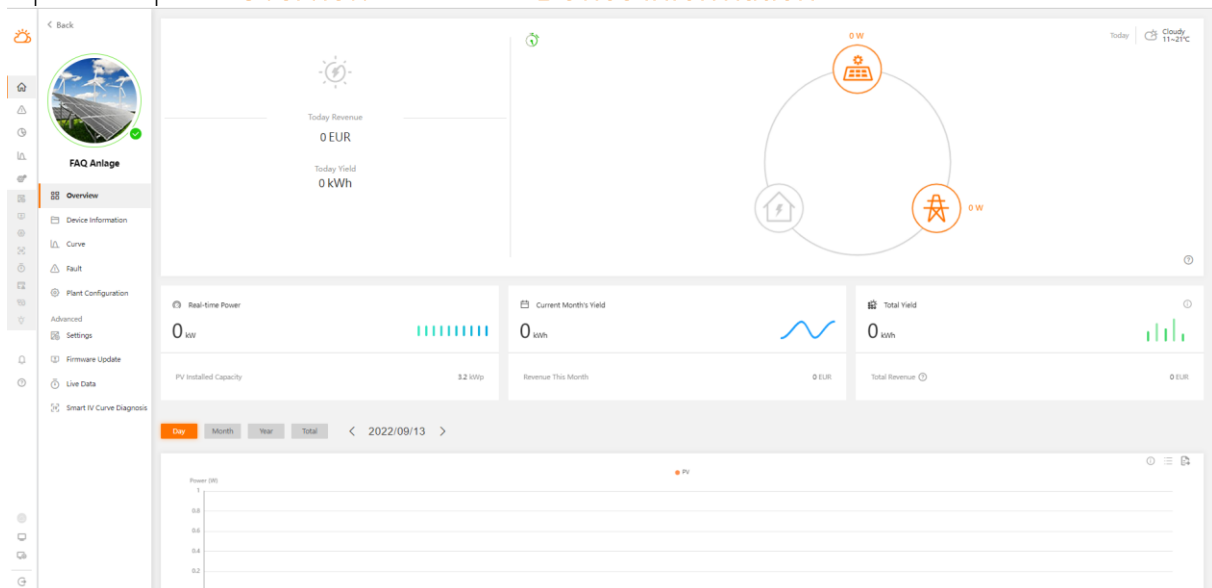
## 1-phase String Inverter-FAQ

# How to replace a 1 phase string inverter in iSolarCloud Web interface

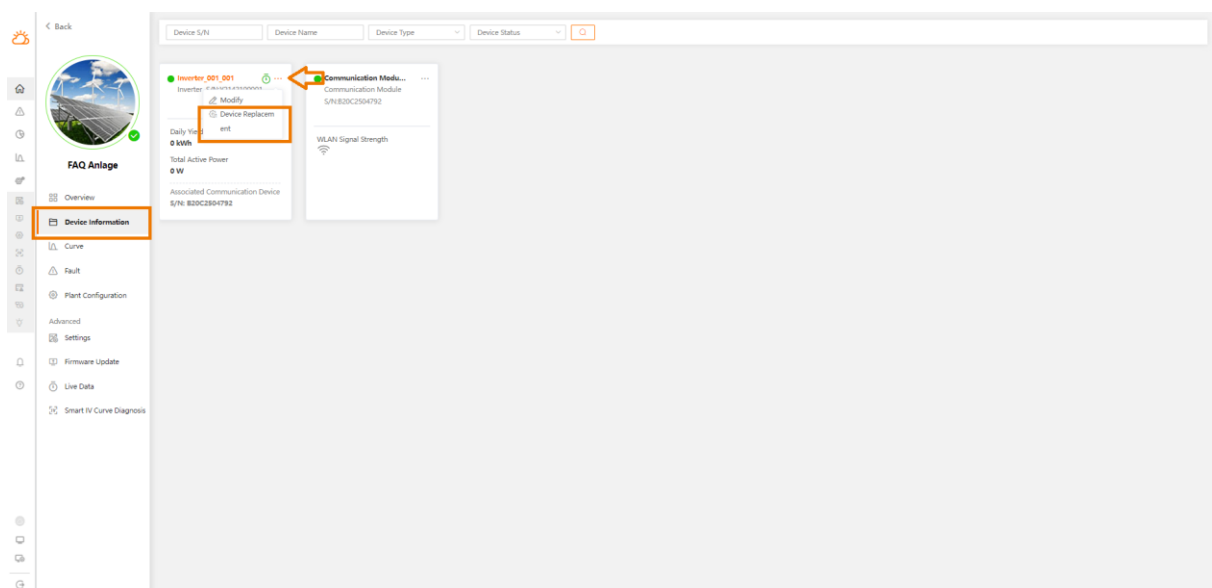
Applicable to: 1-phase string inverters

Before replacing an inverter, make sure you save/screenshot all customer and country specific parameters.

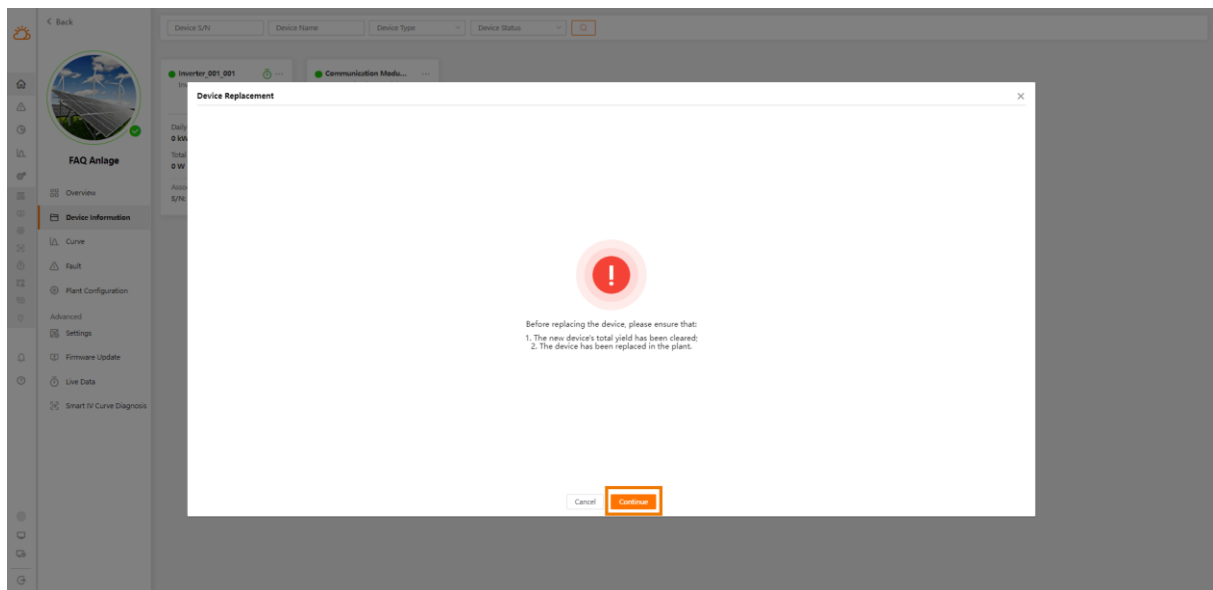
Open the plant **Overview** and select **Device Information**.



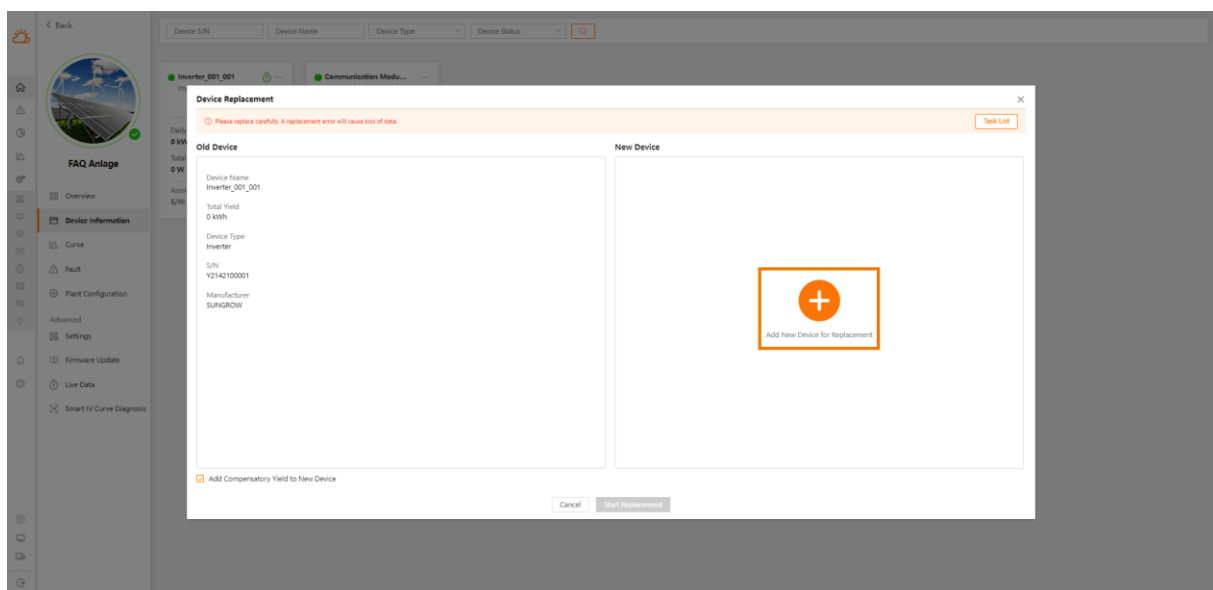
Swipe (don't click) on the three dots of the device, you want to replace. Now click on **Device Replacement**.



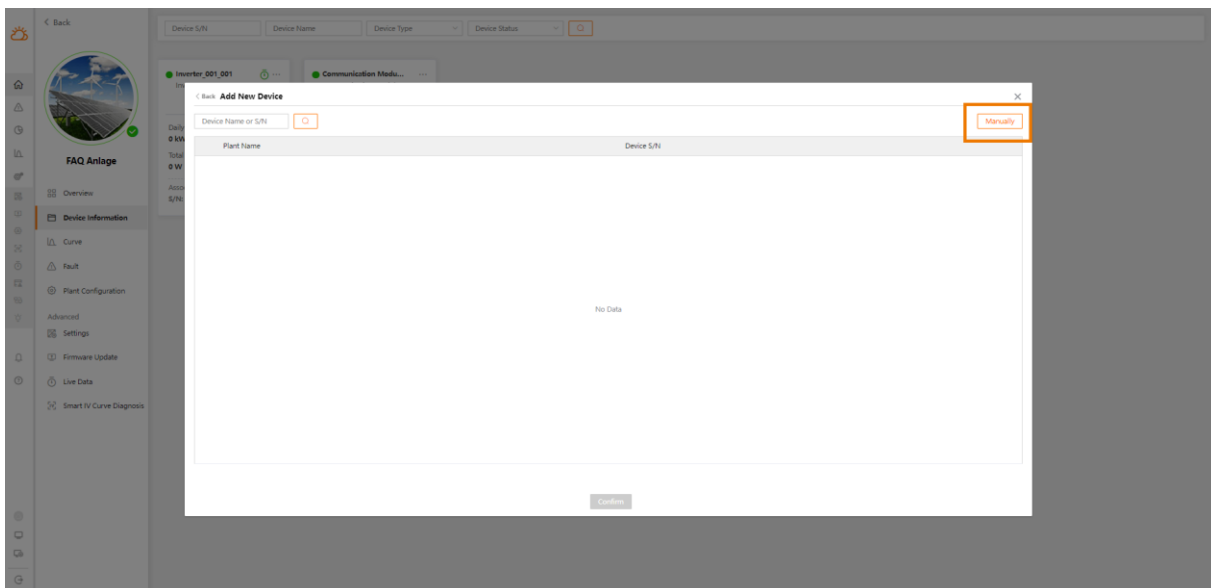
Continue if you are sure, you selected the right device to replace.



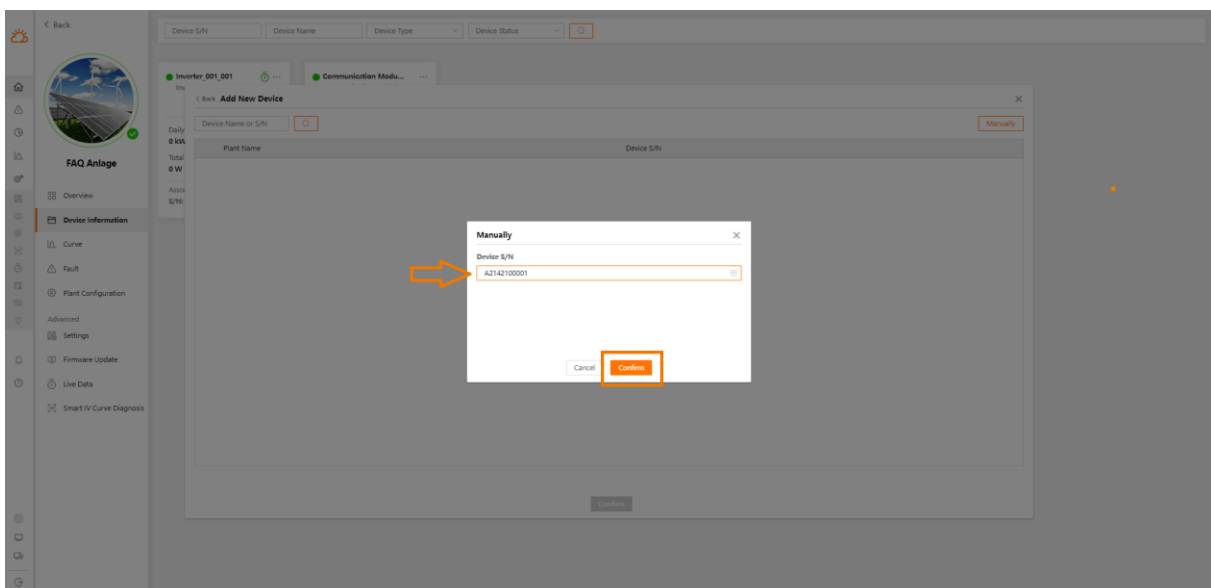
Click + to add the serial number of the new device.



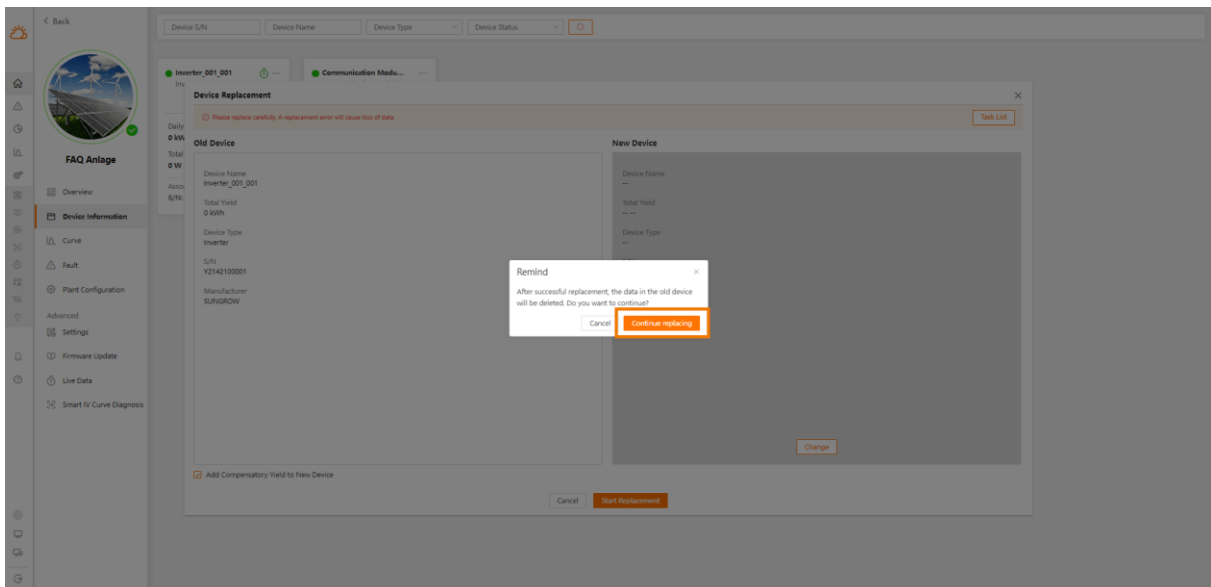
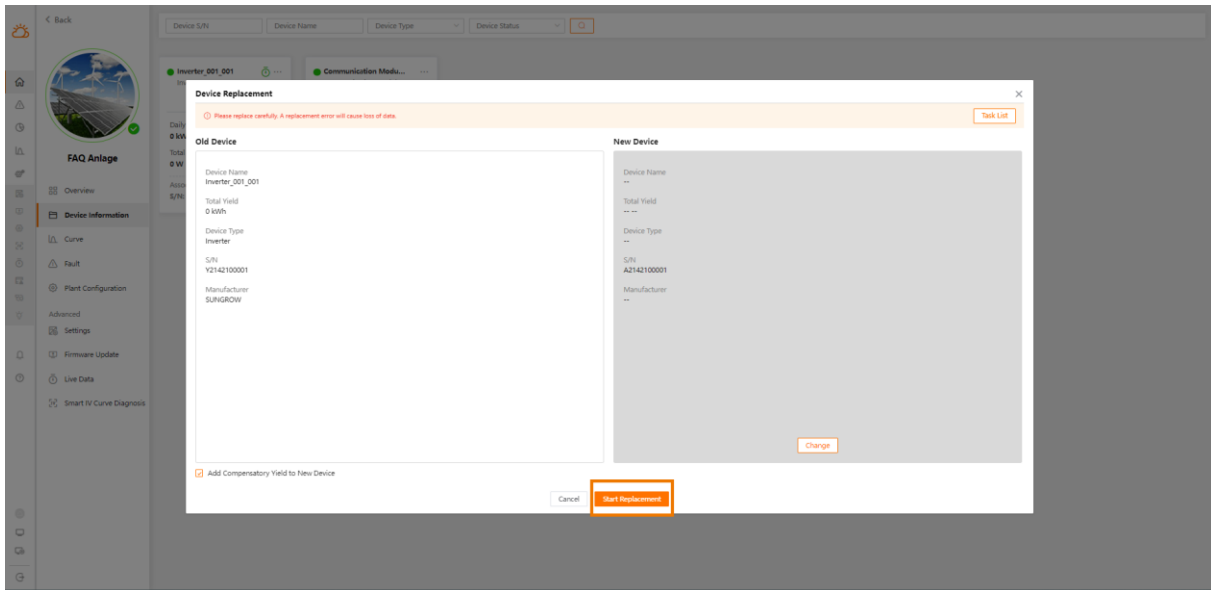
Select **Manually** to insert the serial number.

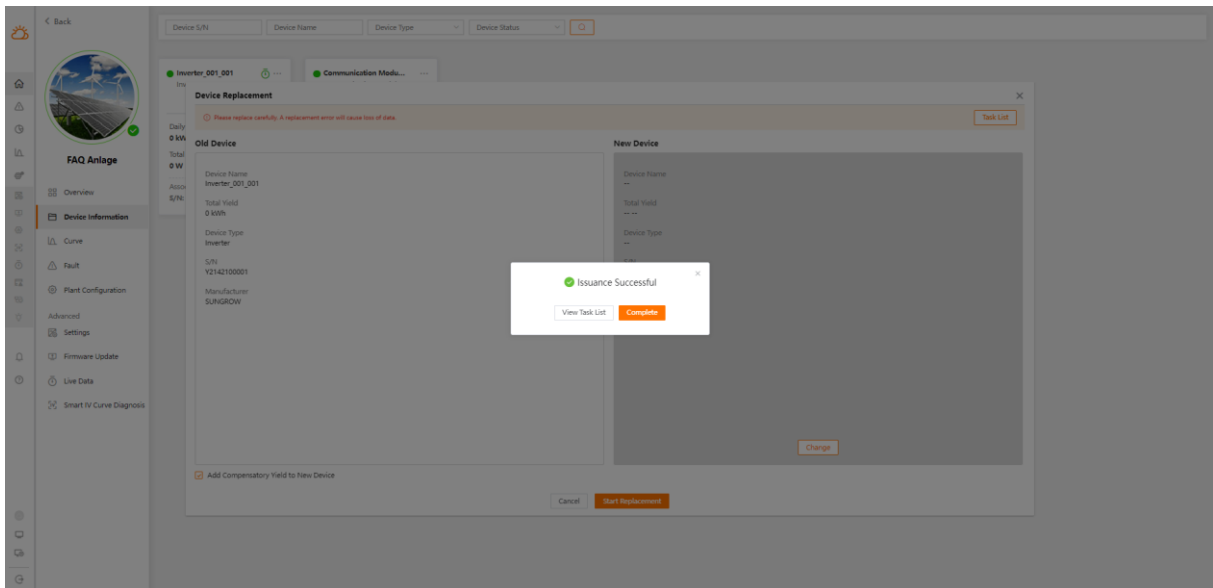


Enter serial number and **Confirm**.

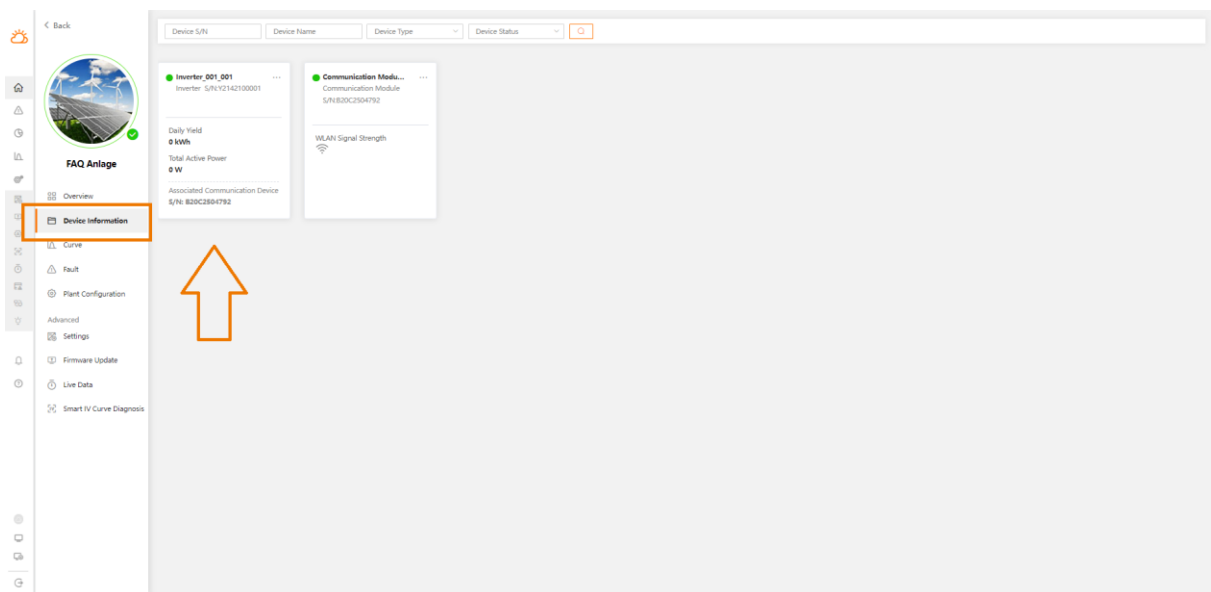


The device information of the new inverter will now be shown on the left side of the screen. Click **Start Replacement** if this information is correct.





If the replacement was successful, the new inverter will now be shown in the **Device Information**.



Make sure customer/country specific parameters are set according to the settings of the previous inverter.

For further information, please download the user manual [here](#).

This manual is intended for professional technicians who are responsible for installation, operation, maintenance and troubleshooting of inverters, and users who need to check inverter parameters. The inverter must only be installed by professional technicians.

The professional technician is required to meet the following requirements:

- Know electronic, electrical wiring and mechanical expertise, and be familiar with electrical and mechanical schematics.
- Have received professional training related to the installation, commissioning and troubleshooting of electrical equipment.
- Be able to quickly respond to hazards or emergencies that occur during installation, commissioning and troubleshooting.
- Be familiar with local standards and relevant safety regulations of electrical systems.
- Read this manual thoroughly and understand the safety instructions related to operations.