

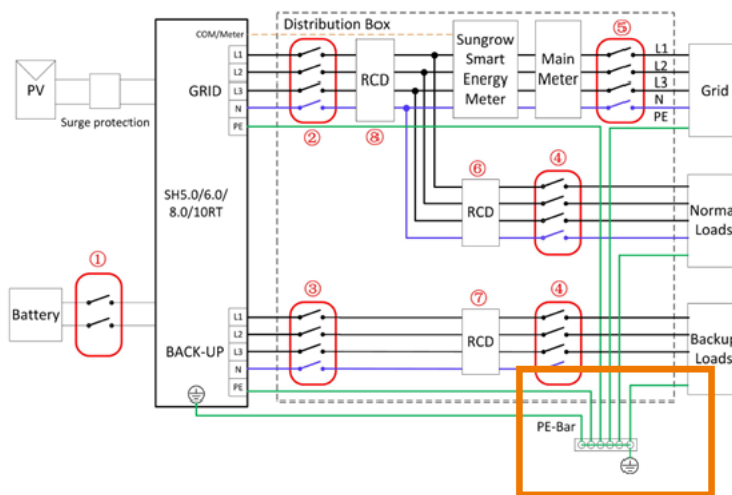
### 3-phase Hybrids-FAQ

## Troubleshooting of SHxxRT ground fault (Error Code 106)

Applicable to: SHxxRT series

In addition to the Error Code 106 mentioned in the troubleshooting, it should be noted that the ground wires in the PV & storage system (including batteries) should be connected to the same PE-Bar respectively. If the requirements are not met, the Error Code 106 will be reported.

In the case of SHxxRS inverter, the Backup port PE should be connected to the PE Bar even if the backup function is not used.



For further information, please download the user manual [here](#).

This manual is intended for professional technicians who are responsible for installation, operation, maintenance and troubleshooting of inverters, and users who need to check inverter parameters. The inverter must only be installed by professional technicians.

The professional technician is required to meet the following requirements:

- Know electronic, electrical wiring and mechanical expertise, and be familiar with electrical and mechanical schematics.
- Have received professional training related to the installation, commissioning and troubleshooting of electrical equipment.
- Be able to quickly respond to hazards or emergencies that occur during installation, commissioning and troubleshooting.
- Be familiar with local standards and relevant safety regulations of electrical systems.
- Read this manual thoroughly and understand the safety instructions related to operations.